



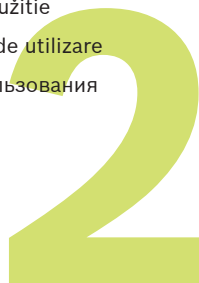
# TASSIMO

suny



## TAS 31xx TAS 32xx TAS 37xx

- de Gebrauchsanleitung
- en Instruction manual
- fr Mode d'emploi
- es Instrucciones de uso
- it Istruzioni per l'uso
- sv Bruksanvisning
- da Brugsanvisning
- no Bruksanvisning
- el Οδηγίες χρήσης
- pl Instrukcja obsługi
- cs Návod k použití
- sk Návod na použitie
- ro Instrucțiuni de utilizare
- ru Правила пользования



**BOSCH**



**de** Inbetriebnahme  
**en** First time use  
**fr** La première utilisation  
**es** Puesta en servicio  
**it** Messa in funzione  
**sv** Idrifttagning  
**da** Ibrugtagning

**no** Første gangs bruk  
**el** Θέση σε λειτουργία  
**pl** Uruchamianie  
**cs** Uvedení do provozu  
**sk** Uvedenie do prevádzky  
**ro** Prima utilizare  
**ru** Ввод в эксплуатацию



**de** Getränkezubereitung  
**en** Beverage preparation  
**fr** Préparation de boissons  
**es** Preparación de bebidas  
**it** Preparazione delle bevande  
**sv** Tillredning av drycker  
**da** Tilberedelse af drikke

**no** Tilberedning av drikker  
**el** Παρασκευή ροφήματος  
**pl** Przygotowanie napoju  
**cs** Příprava nápojů  
**sk** Príprava nápojov  
**ro** Prepararea băuturilor  
**ru** Приготовление напитков



**de** Reinigen  
**en** Cleaning  
**fr** Nettoyage  
**es** Limpiar  
**it** Pulizia  
**sv** Rengöring  
**da** Rengøring

**no** Rengjøring  
**el** Καθαρισμός  
**pl** Czyszczenie  
**cs** Čistění  
**sk** Čistenie  
**ro** Curățarea  
**ru** Очистка



**de** Entkalken  
**en** Descaling  
**fr** Détartrage  
**es** Descalcificar  
**it** Decalcificare  
**sv** Avkalkning  
**da** Afkalkning

**no** Avkalking  
**el** Απασβέστωση  
**pl** Odkamienianie  
**cs** Odstranění vodního kamene  
**sk** Odstránenie vodného kameňa  
**ro** Decalcifierea  
**ru** Удаление накипи

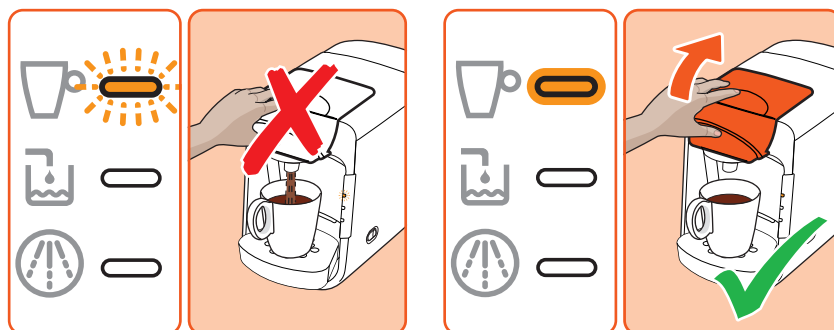
**de** Stromschlaggefahr!  
**en** Risk of electric shock!  
**fr** Risque de choc électrique!  
**es** ¡Peligro de electrocución!  
**it** Pericolo di scossa elettrica!  
**sv** Risk för elektrisk stöt!  
**da** Fare for elektrisk stød!  
**no** Fare for elektrisk støt!  
**el** Κίνδυνος ηλεκτροπληξίας!

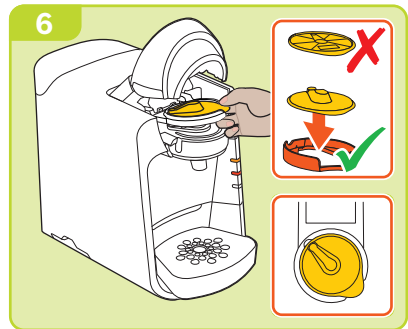
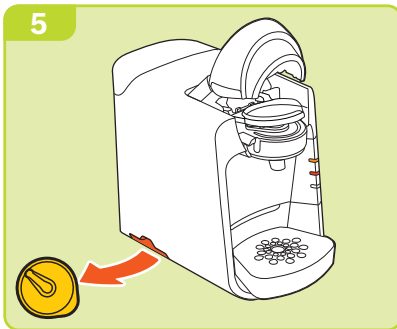
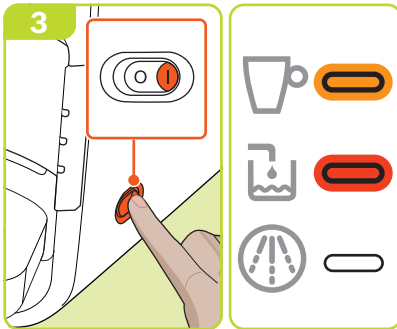
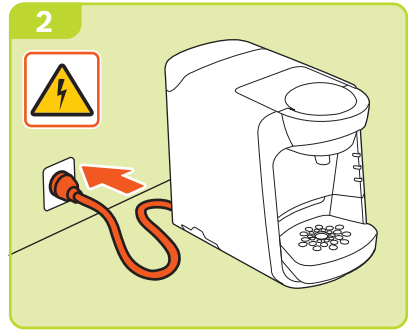
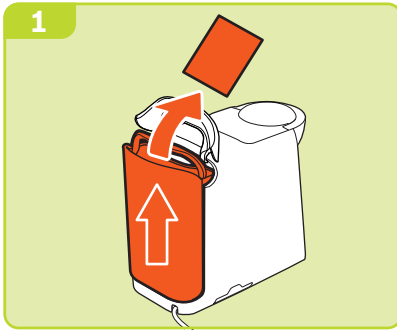
**pl** Niebezpieczeństwo porażenia prądem!  
**cs** Nebezpečí úrazu elektrickým proudem!  
**sk** Nebezpečenstvo zasiahnutia elektrickým prúdom!  
**ro** Pericol de electrocutare!  
**ru** Опасность поражения током!

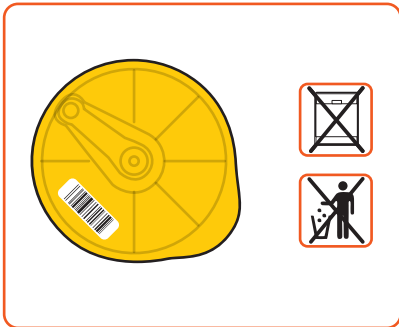
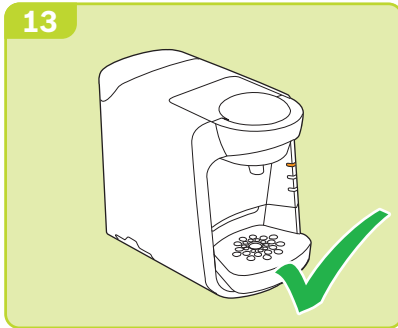
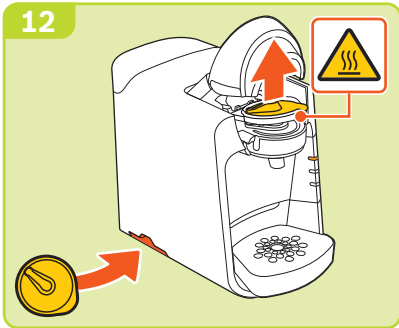
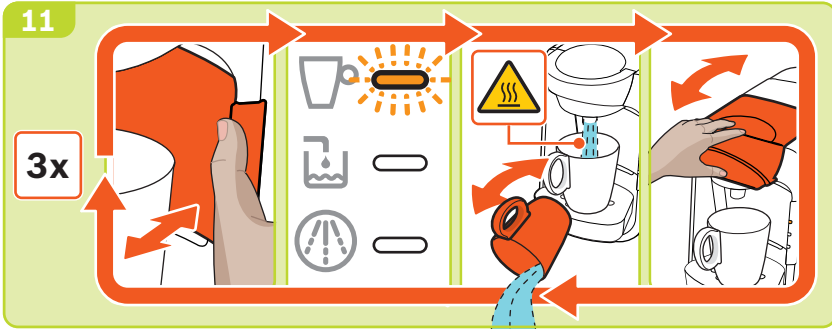
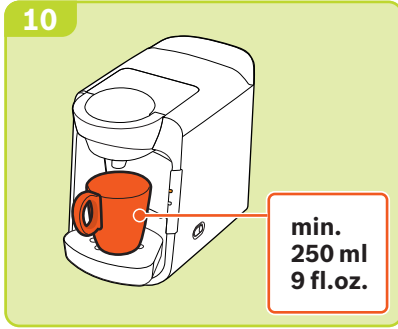
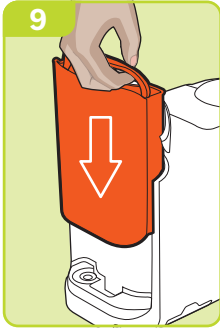


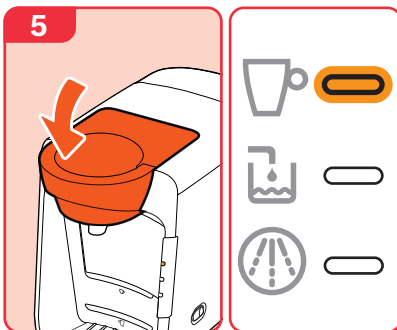
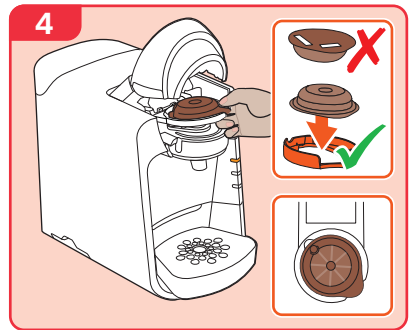
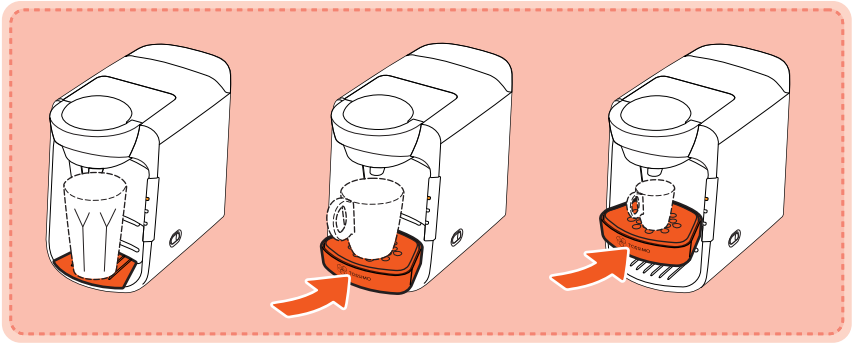
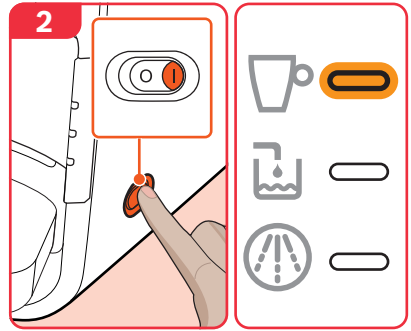
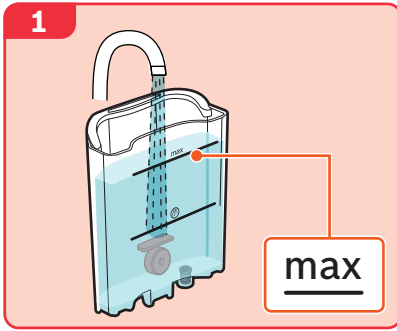
**de** Verbrennungsgefahr!  
**en** Risk of burns!  
**fr** Risque de brûlure!  
**es** ¡Peligro de quemaduras!  
**it** Pericolo di ustioni!  
**sv** Brännskaderisk!  
**da** Fare for forbrænding!

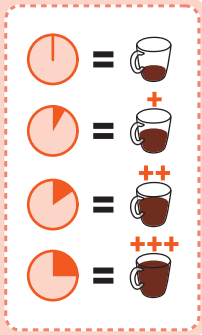
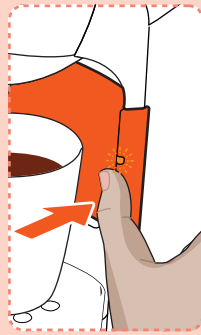
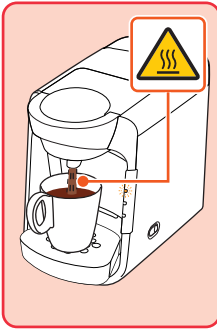
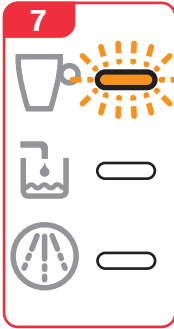
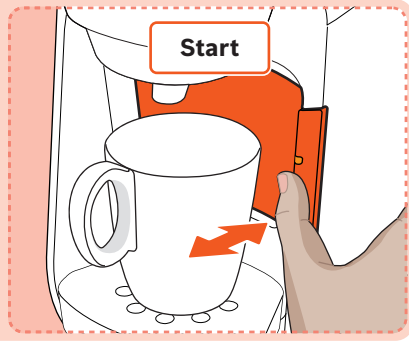
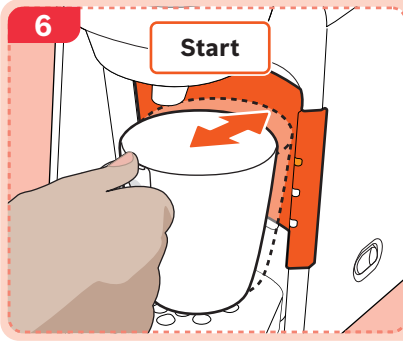
**no** Fare for forbrenning!  
**el** Κίνδυνος εγκαυμάτων!  
**pl** Niebezpieczeństwo poparzenia!  
**cs** Nebezpečí opaření!  
**sk** Nebezpečenstvo oparenia!  
**ro** Pericol de arsuri!  
**ru** Риск получения ожогов!

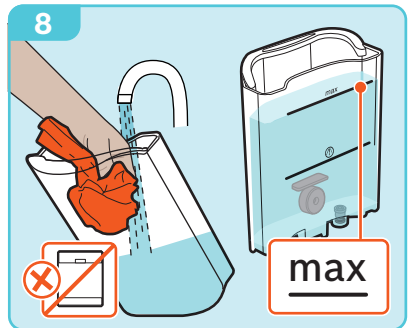
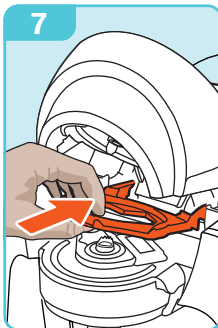
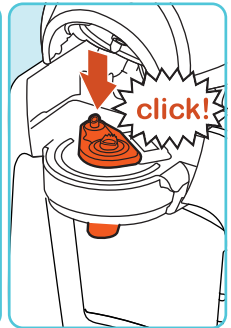
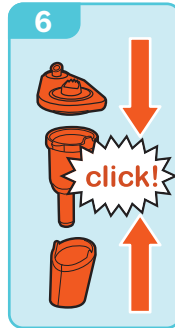
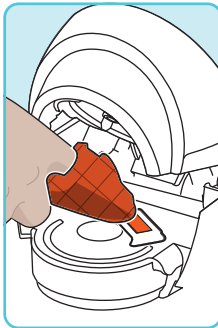
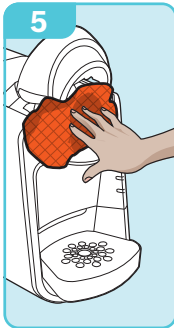
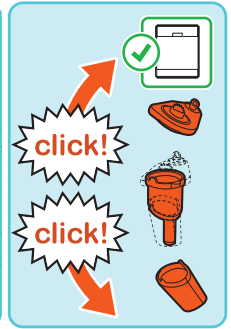
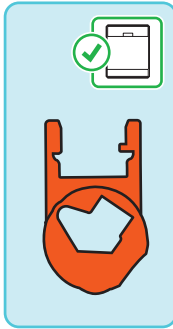
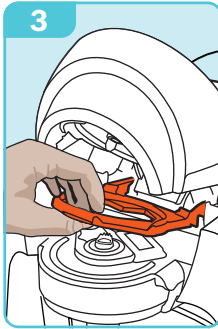
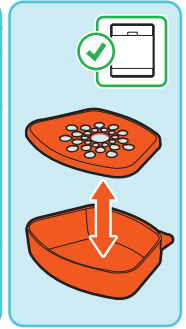
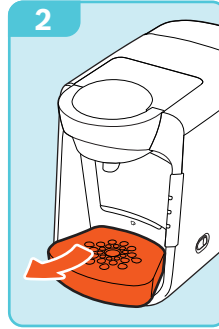
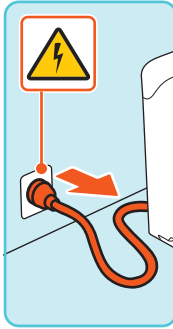
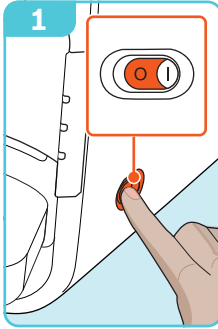




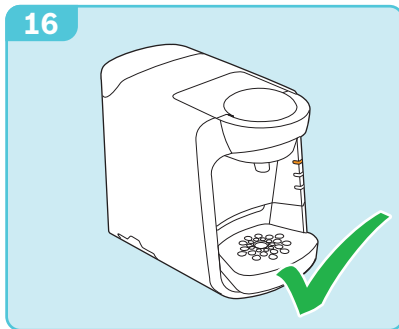
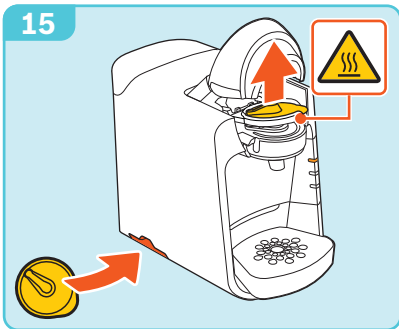
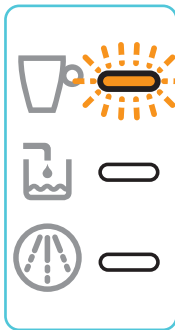
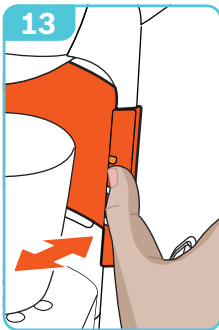
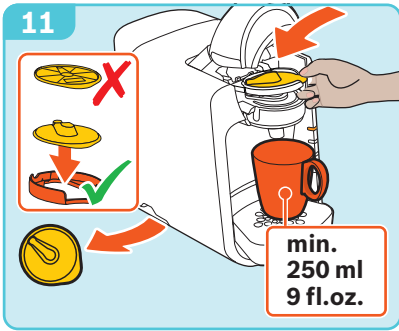
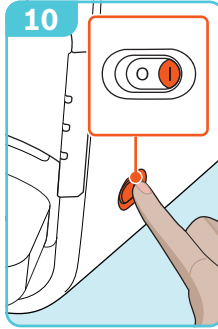
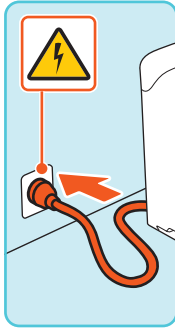
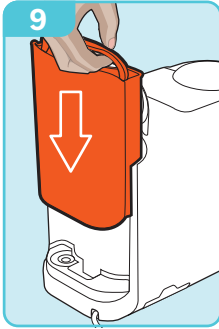


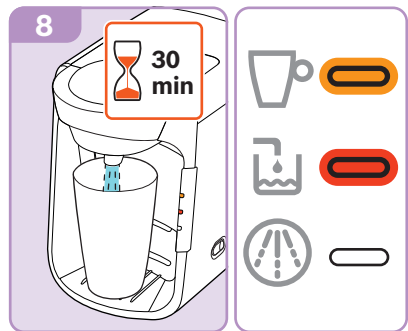
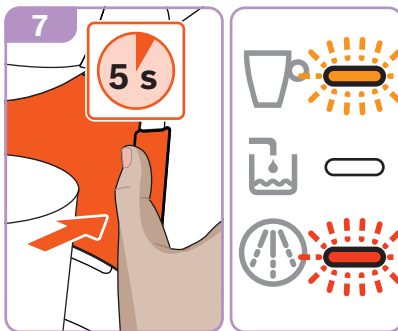
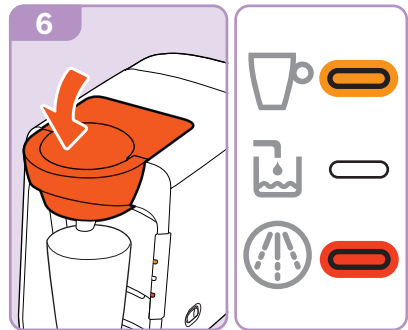
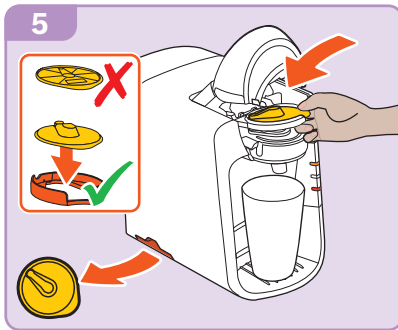
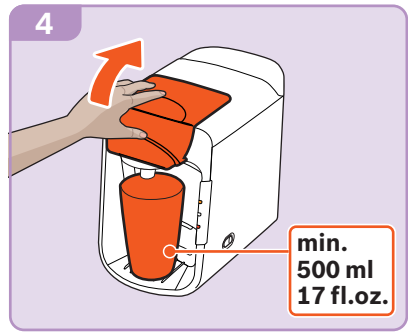
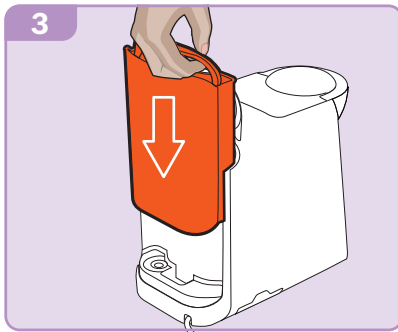
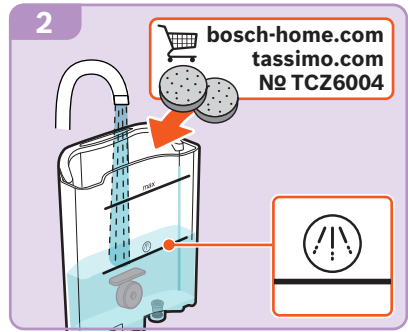
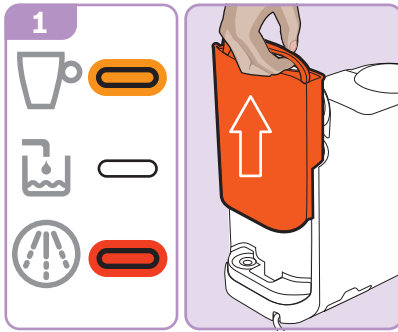


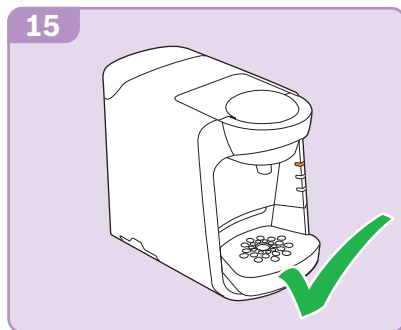
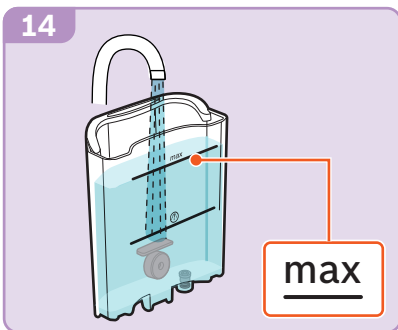
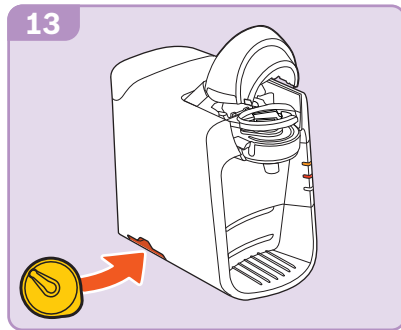
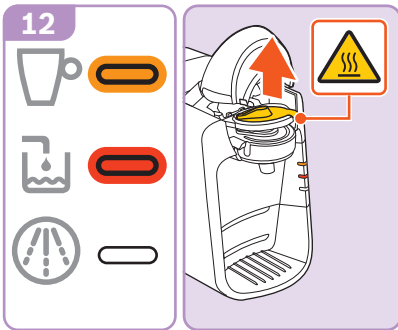
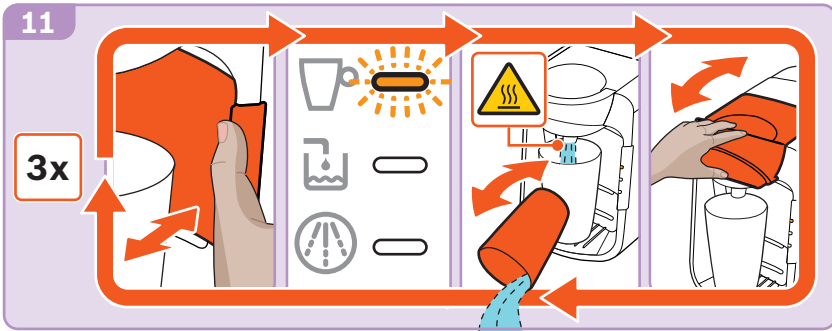
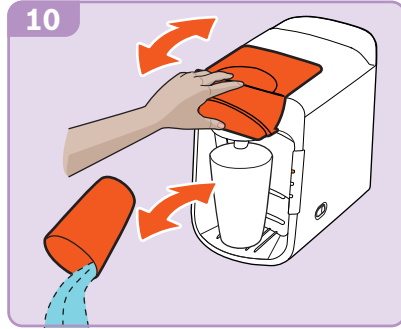














- de** Beachten Sie unbedingt die Sicherheitshinweise in der beiliegenden Gebrauchsanleitung – Teil 1! Dort finden Sie auch detaillierte Informationen zum Gebrauch, Garantiehinweise und Kontaktadressen.
- en** Always follow the safety instructions in the included manual part 1! You will also find detailed information regarding Care and Use, Warranty and Contact information for Customer Service.
- fr** Suivez toujours les consignes de sécurité fournies dans la partie 1 de ce manuel. Vous trouverez également des informations sur l'entretien, l'utilisation, les conditions de garantie et les coordonnées du service client.
- es** Lea atentamente estas instrucciones de uso y la información adjunta antes de utilizar la máquina. También encontrará información detallada referente al uso, garantía y direcciones de contacto.
- it** Seguire sempre le avvertenze di sicurezza nelle istruzioni per l'uso allegate – Parte 1! È inoltre possibile trovare informazioni dettagliate sull'uso, informazioni sulla garanzia e indirizzi di contatto.
- sv** Beakta säkerhetsanvisningarna i del 1 i den bifogade bruksanvisningen. Där hittar du också detaljerade informationer om användningen, garantin och kontaktadresser.
- da** Følg under alle omstændigheder sikkerhedsanvisningerne i den vedlagte brugsanvisning – del 1! Her finder du også detaljer om brug, garantioplysninger og kontaktadresser.
- no** Følg alltid instruksjonene i den vedlagte bruksanvisningen – del 1! Der finner du også detaljert informasjon om bruk, garantivilkår og kontaktadresser.
- el** Προσέξτε οπωσδήποτε τις υποδείξεις ασφαλείας στις συννημένες οδηγίες χρήσης – μέρος 1! Εκεί θα βρείτε επίσης λεπτομερείς πληροφορίες για τη χρήση, υποδείξεις εγγύησης και διευθύνσεις επικοινωνίας.
- pl** Należy koniecznie przestrzegać instrukcji bezpieczeństwa w dołączonej instrukcji obsługi – część 1! Można znaleźć tam również szczegółowe informacje na temat użytkowania urządzenia, gwarancji oraz adresy kontaktowe.
- cs** Vždy dbejte bezpečnostních pokynů uvedených v příloženém návodu k použití – část 1! Zde najdete také podrobné informace týkající se použití, záruční podmínky a kontaktní adresy.
- sk** Venujte bezpodmienečne pozornosť bezpečnostným pokynom uvedeným v priloženom návode na použitie – časť 1! Tu nájdete aj podrobné informácie o používaní, záručné podmienky a kontaktné adresy.
- ro** Vă rugăm să respectați obligatoriul instrucțiunile de siguranță prezentate în instrucțiunile de utilizare atașate - partea 1! Acolo găsiți informații detaliate cu privire la utilizare, indicații referitoare la garanție și date de contact.
- ru** Обязательно соблюдайте указания по технике безопасности, которые приведены в части 1 инструкции по эксплуатации! В инструкции Вы найдете подробную информацию об использовании и гарантии, а также контактные данные.